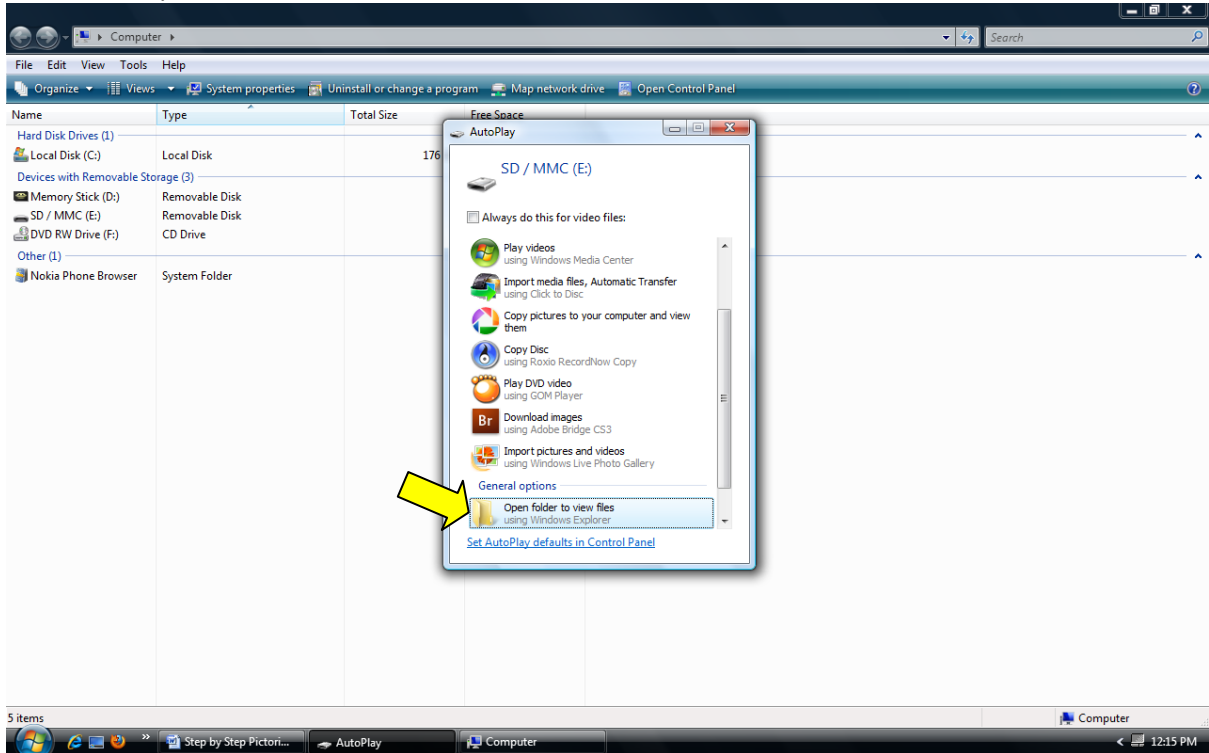


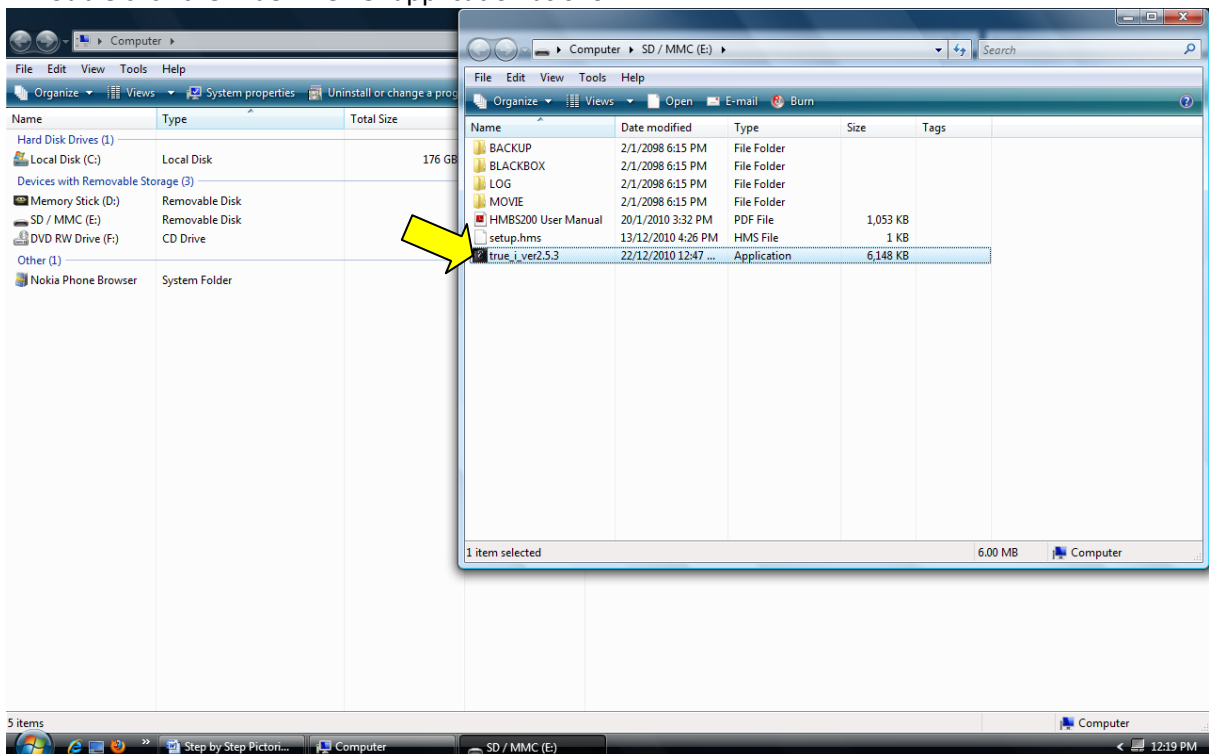
Pictorial Guide

How to Access Recorded Files and GPS Log

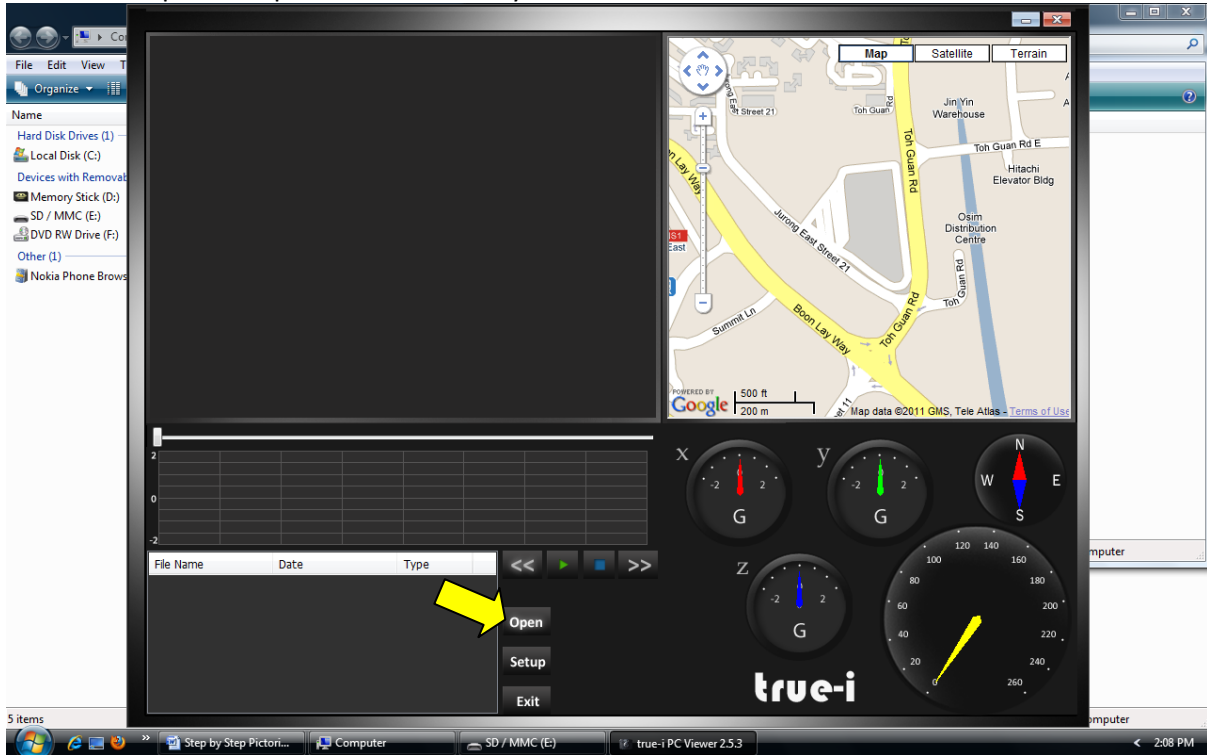
1. Turn True-i **OFF** before taking out SD card.
Insert SD card into the SD card slot on the computer.
Click on "Open folder to view files".



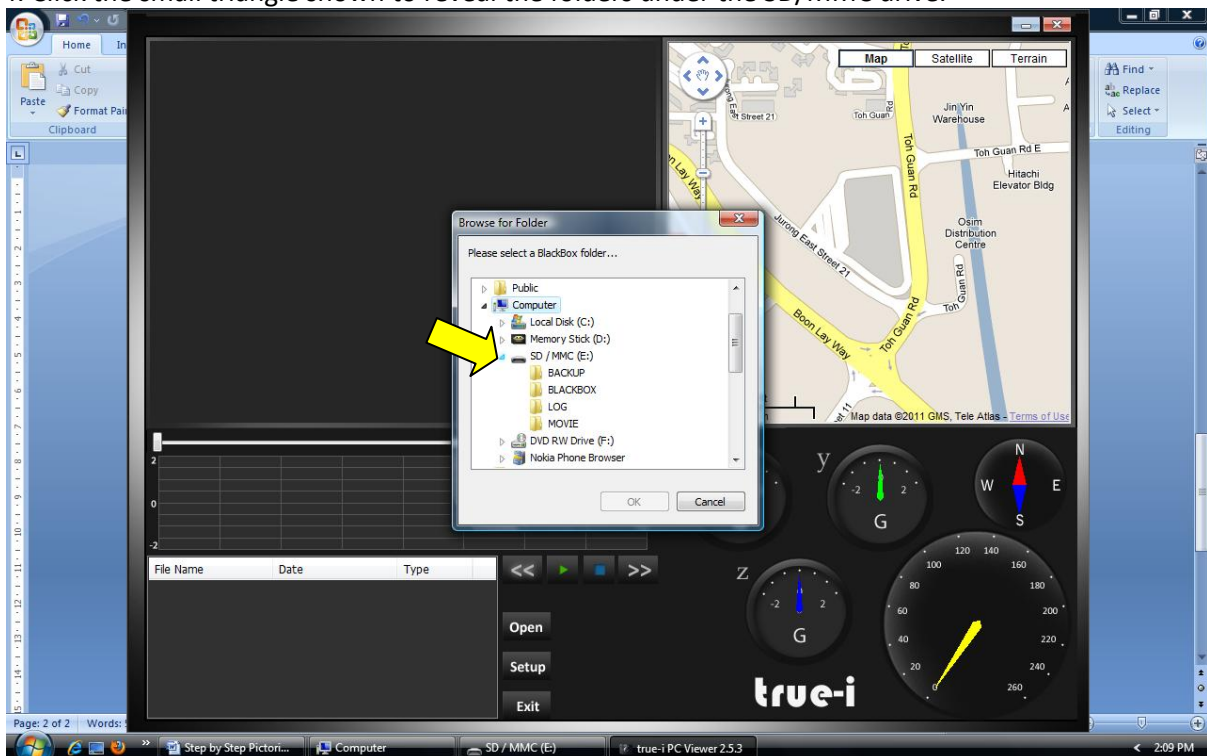
2. Double click the True-i viewer application as shown.



3. Click on "Open" to open the file directory.



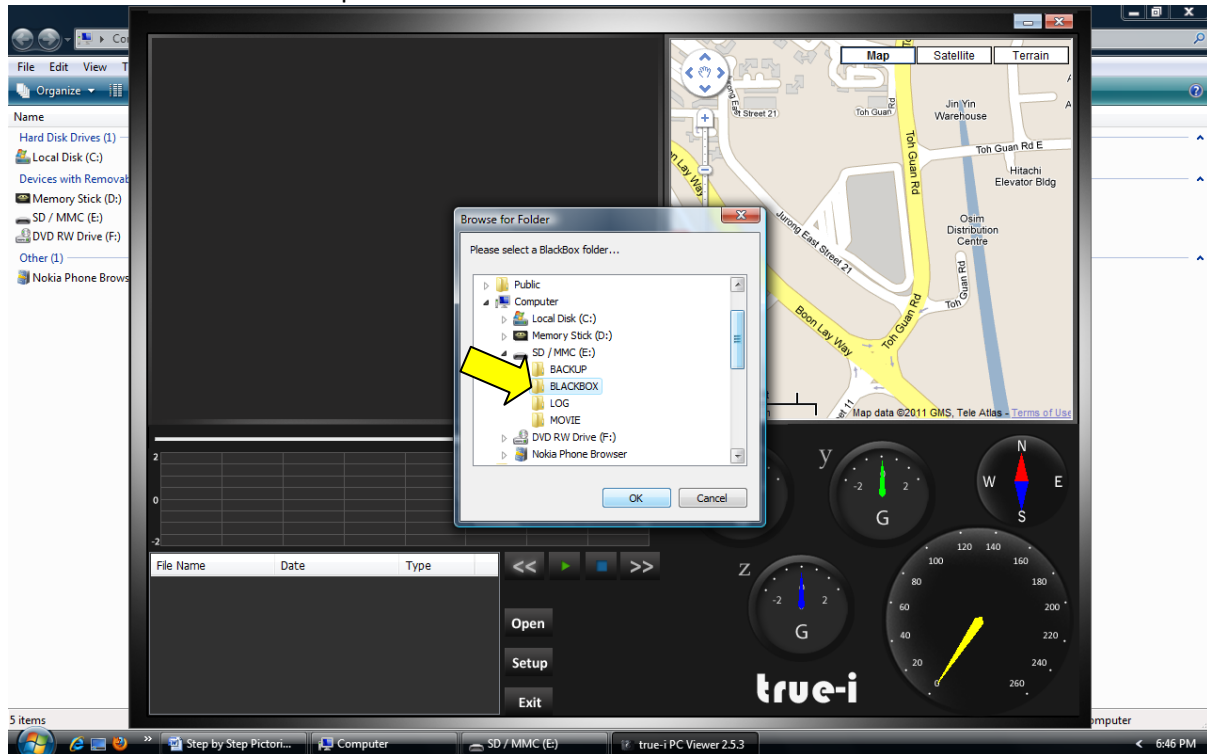
4. Click the small triangle shown to reveal the folders under the SD/MMC drive.



5. Choose and click one:

- Backup –Recordings during hard braking and suspected vandalism during parking
- Blackbox –Recordings during normal operation
- Log – GPS log records
- Movie – Not viewed using True-i viewer. Simply double click actual files to play them.

Then click “OK” to load the specified files.



6. Click on the specific file to play the file.

Internet connection is required in order to display GPS map data.

